



### Technical Specification

Specifications	Non-mydratic
Lens type	Aspherics
Capture mode	Color photography
Auto function	Automatic focus/Automatic setting flash intensity/Automatically take picture /Automatic Mosaic
Observation way	10"touch screen
Field of view	53°
Minimum pupil size	3.3mm
Camera resolution	24.1 Mega Pixel
Light source	infrared LED
Diopter compensation	± 15D
Fixation lamp	Eleven internal fixation lamp
Medical network	Dicom 3.0
working distance	42mm± 2mm



## Characteristic

- Artificial intelligence: one-click touch, obtain perfect image without professional training. avoid complex manual operation and strict operation requirement.
- shoot quickly: within 30 seconds, achieve double eye take picture
- Touch screen operation, easy to operate; software interface is simple.
- High quality optic and imaging system, ensure image fidelity, present the details of the fundus, provide reliable diagnostic evidence. Automatic Mosaic, one-click operation, present a wide range of the fundus.



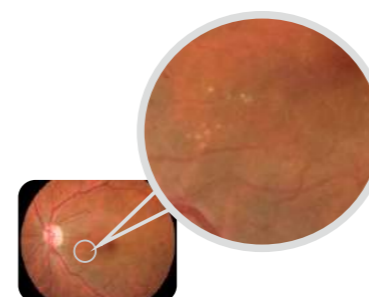
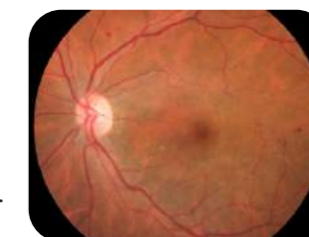
Diameter 3.3mm

## Non-mydriatic design

Minimul Pupil size 3.3mm, which can also take clear images without mydriatic, Suitable for wider population, suitable for patients who can not mydriatic.

## Single image up to 53-degree range

Just shoot a few pictures can complete a fundus examination. Saving you valuable time, but also reduce the rate of misdiagnosis.



## Image resolution is up to 24.1 mapeixel

Nikon's SLR camera as an imaging device, which up to 24.1million pixel image resolution, even if enlarged three times, the image is still clear.

## Full fixation system

External fixation target and nine-point internal fixation, meeting your requirement of the peripheral retinal shooting needs.

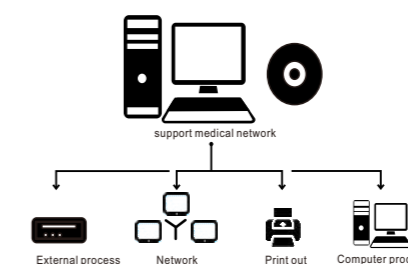


## Multifunctional Software System

Image capture - image analysis - Clinical Diagnostics - report printout - data management, statistics.



Mosaic fundus image



DICOM interface remote consultation



Professional data management