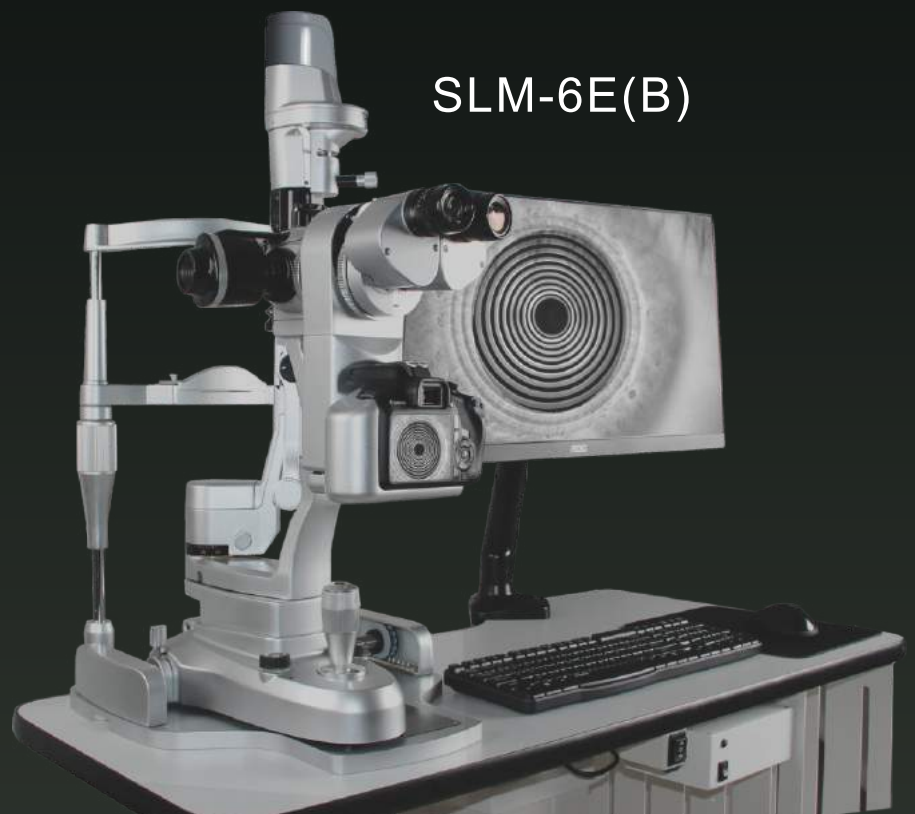


DRY EYE ANALYZER

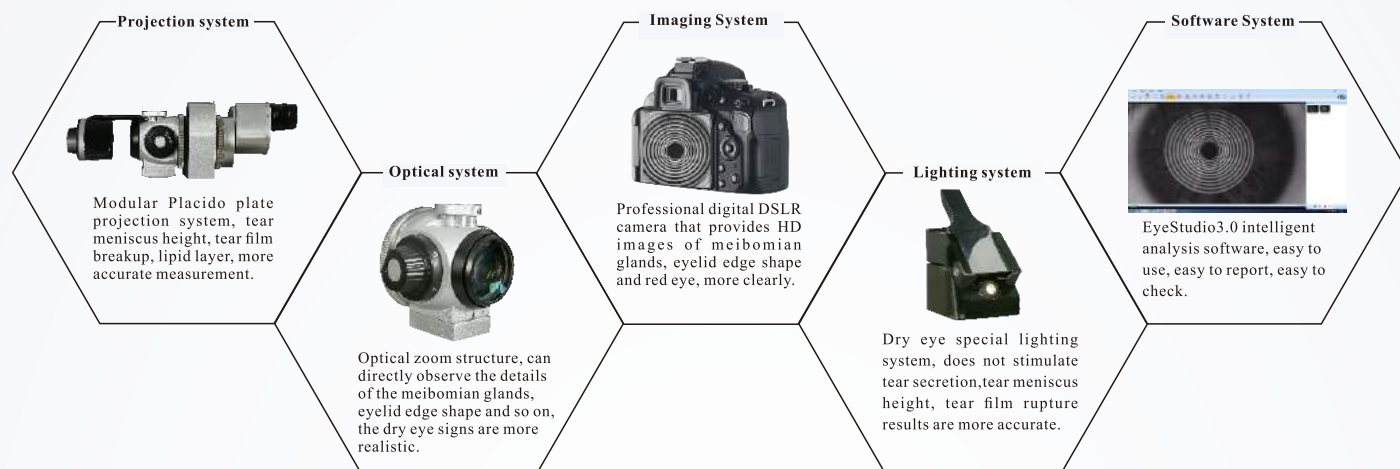


SLM-6E(B)

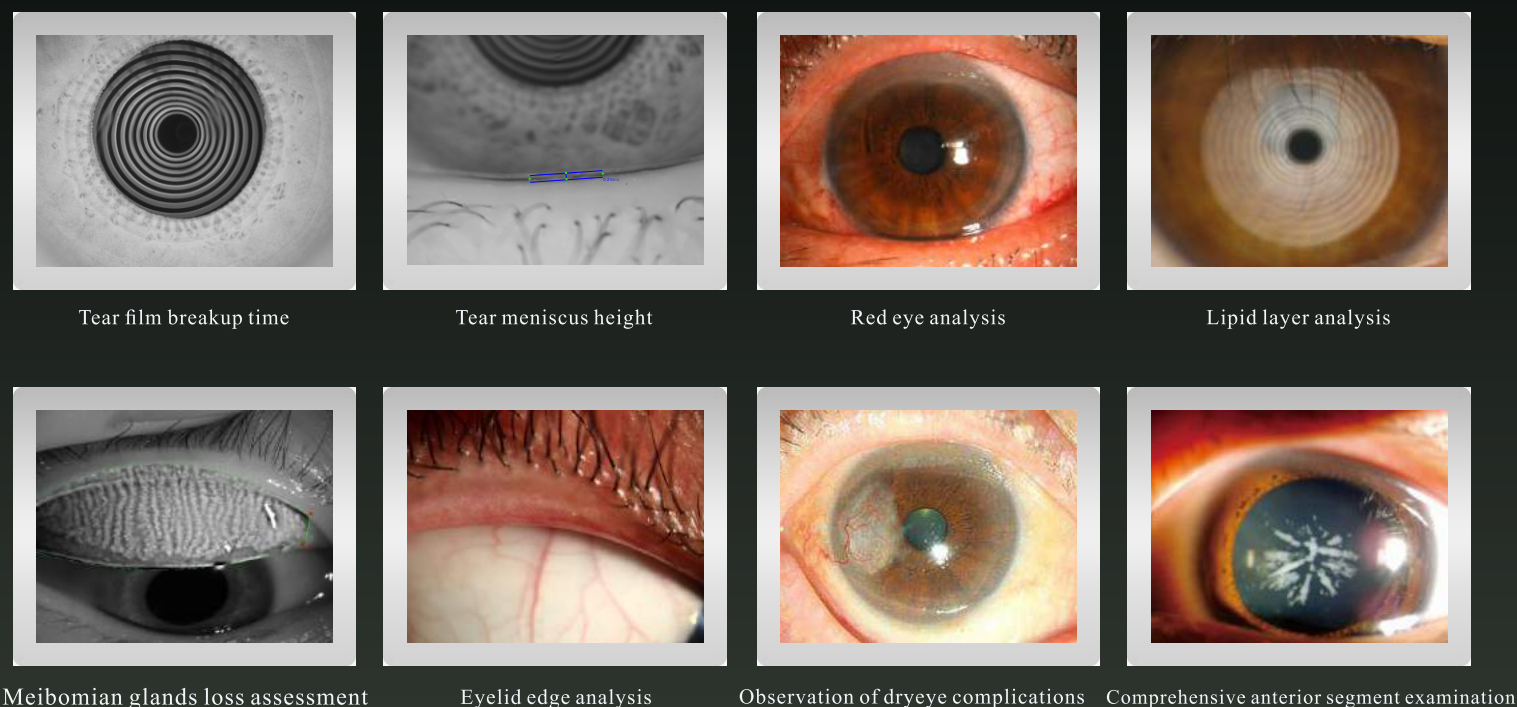
**Professional dry eye analysis equipment,
comprehensive anterior segment diagnostic solution**

- ※Bright modern colors, exquisite ergonomic design, meet higher aesthetic and operational needs at the same time;
- ※Special projection device combined with high-pass light transmission road design, tear meniscus height, tear film breakup, lipid layer measurement more accurate;
- ※Non-invasive tear detection uses infrared illumination to reduce the effect of light on tear morphology;
- ※Optical zoom structure, observe the dry eye signs such as meibomian glands and eyelid edge shape are more realistic;
- ※Intelligent brightness adjustment to provide optimal lighting solutions for different inspection items;
- ※Multi-stage cobalt blue filter adjustment, auxiliary examination of dry eye complications is more accurate.
- ※Depth of field adjustment, contrast enhancement filter, synchronous confocal flash, etc. are available for upgrade to meet higher image accuracy requirements.

Five professional systems to build unique dry eye analysis equipment



Anterior segment integrated diagnosis



Chongqing kanghua Ruiming S&T Co., Ltd

Add: No. 5, Road 1, Tongjiyaxi Industrial Park, Beibei, Chongqing, China

Tel: +86-023-63227333

Fax: +86-023-63227336

Zipcode: 400700

E-mail: kanghuuaa@kanghuuaa.com

Web: www.kanghuaruming.com / www.kanghuuaa.com



Company website