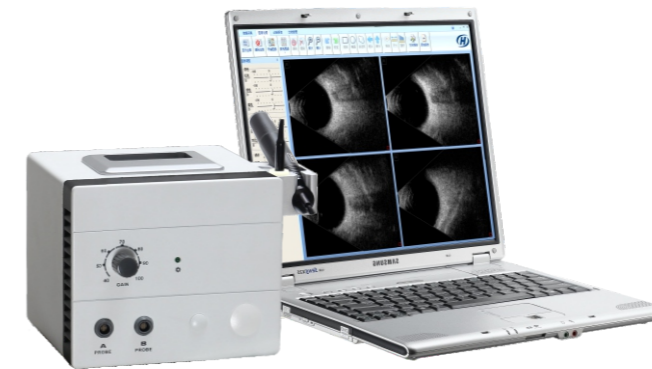


# Ophthalmic A/B Scan

# Ophthalmic A/B Scan



CAS-2000AER (Touch Scéen)



CAS-2000BER (Model A)



CAS-2000BER (ModelB)

## Product Features:

- ⦿ Computerized software, acquisition and processing;
- ⦿ DICOM3.0 interface (**Optional**), common database of cases;
- ⦿ Dynamic playback B scan image, never miss out any detail;
- ⦿ B scan grey scale reaches 256, image is more delicate;
- ⦿ Post processing: lesion analysis, measurement calculations, zooming, etc.
- ⦿ Laser printer: higher precision, lower printing costs

## Technical Specification

Probe	10 Mhz
Method	Contact, Immersion (optional)
Accuracy	0.05mm
Storage	8 Groups
IOL Table Calculate	SRK-II, SRK/T, Hoffer-Q, Holladay, SCDK, Haigis
Measure	ACD, Lens, Vitreous, Axial Length and its average value
Mode	Manual and Automatic
Display Monitor	High Speed Touch LCD
Report Data	Patient's name, ID, Right/left eye, Doctor's Name, Data, IOL
Printer	Inner Therma Printer
Power	AC 110V/220V ±10%, 50Hz

## Technical Specification

B Scan		A Scan	
Scan Mode	Sector	Probe Frequency	10MHz
Scan Angle	53°	Measurement Accuracy	≤0.04mm
Detect Depth	≥50mm	Measure	ACD, Lens, Vitreous, Axial Length and its average
Probe Frequency	10MHz		
Scan Line	512 Lines	Modes	Manual, Automatic
Gray Scale	256	Data processing Results	IOL Parameter Selection Table
Image Storage	Freeze 10 images	Output Mode	Laser Printer
Image Post Processing	Brightness, comparison, smooth, sharp, gray, stretch, equalize, etc.	IOL Table Calculate	SRK- II , SRK-T, Hoffer-Q, Holladay, SCDK, Halgis.