

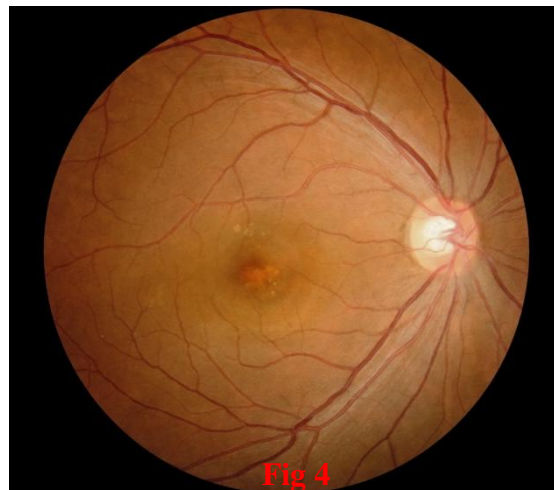
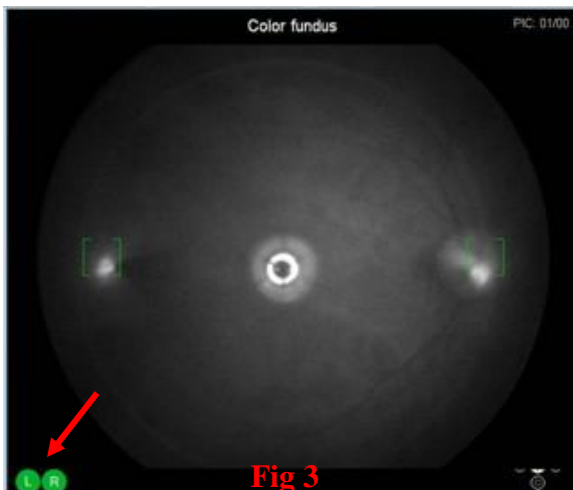
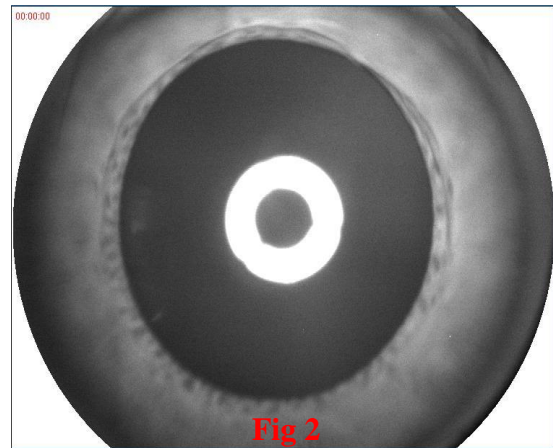
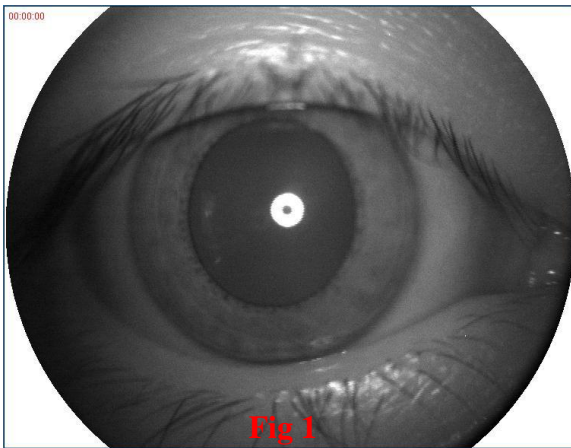
Operation Instruction

Boot order: Main power → Computer power → Device power → Software

Shut order: Software → Device power → Computer power → Main power

A、 Fundus camera mode:

- A1、 Run eyestudio software and input the patient's information;
- A2、 Adjust the height of the chin-rest to make the examination eye in the line with eye position mark;
- A3、 Operate the joystick to sight the examination eye (Fig 1), then move forward into fundus until two convergence light dots appeared in the middle line (Fig 3). then **MF**: adjust the focus knob to make the image clearest and select the flash level according to the pupil size ;
AF: the L or R red icon start to coruscate (auto focus) until it turn green (Fig 3).



- A4、 Press the button and take a picture (Fig 4); Repeat A3 and exam another eye.

Note: The examination should be done in a dark room; Pupil size > 3.3mm.
(pupil not dilation, when shooting first time, the pupil size will become small, if no break between two times flash , continue to shoot second picture, it will affect the image quality, so best way, it needs about 20 second pause)

B、Fluorescein fundus angiography mode (FFA):

B1、Pre-inspection preparation:

B1.1、 Detailed inquiry about the patient's medical history, to understand whether there is any disease about allergy、 heart、 liver、 kidney , or pregnancy, pregnant woman and contraindications can't do this examination;

B1.2、 Routine ophthalmic examination to understand refractive media and intraocular pressure;

B1.3、 Mydriasis and introduce the purpose, method and cooperation of FFA to patients and their families, and describe the possible risks and drug reactions during FFA examination;

B2、 Skin test: Dilute 0.1 ml 20% sodium fluorescein solution with 10 ml saline, then the injection was slowly intravenous within ten minutes ; If no allergic reaction, start examing;

B3、 Choose the FFA item ,**MF mode** in software and switch the knob to FFA on device; change the flash to 5 level;

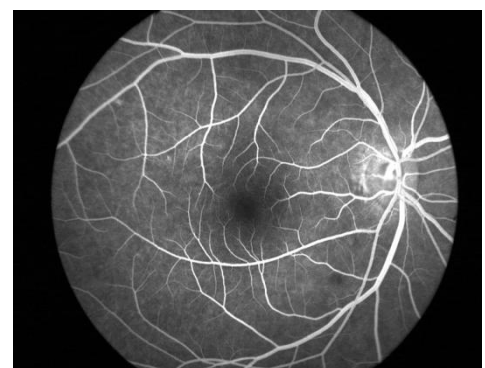


B4、 Adjust the fundus image clearest reference to A2~A3;

B5、 Taken 3~5ml of 20% fluorescein sodium solution and inject into the elbow vein within 4 seconds; At the same time, the operator presses the shoot button to start recording; Shoot the pictures according to the specific situation, and change the flash level according to the image brightness;

B6、 Take the early, middle and late images in different time periods of different peripheral fundus within 8 to 15 minutes;

B7、 Please click save firstly after the examination is completed;



B8、 Select images to add report and print.

Note:

1. Doctor should dilate patient pupil size.
2. Inject sodium fluorescein, shoot, start recording time must be synchronous.